

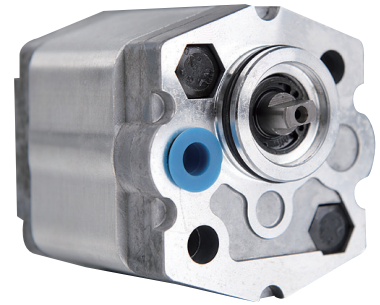
简介 General Description

CBKA 齿轮泵系高压小排量齿轮油泵，由一对高强度齿轮、轴套、泵体、前盖、后盖等主要部件组成，轴向间隙由高精度浮动轴套自动补偿，使得CBKA 齿轮泵具有高的机械效率和容积效率，该泵噪音低、重量功率比小，广泛应用各种交流和直流液动力单元和中小型液压系统。

用户订货时应注意，CBKA 系列齿轮泵有顺时针、逆时针两种转向及后盖进/前盖出、泵体进/后盖出、后盖进/泵体出、泵体进/泵体出、后盖进/后盖出五种进出油方式。

The CBKA gear pump consists of a gear pair supported by two aluminum bearing blocks, a housing, front cover and rear cover. The axis clearance can be automatically compensated by the bearing blocks. The CBKA pumps features are high mechanical and volumetric efficiency, low noise level as well as low weight/power ratio.

Notes: The CBKA series of gear pump has five options of inlet/outlet positions rear in/front out, side in/rear out, rear in/side out, side in/side out, rear in/rear out. Both CW and CCW direction pumps are available.

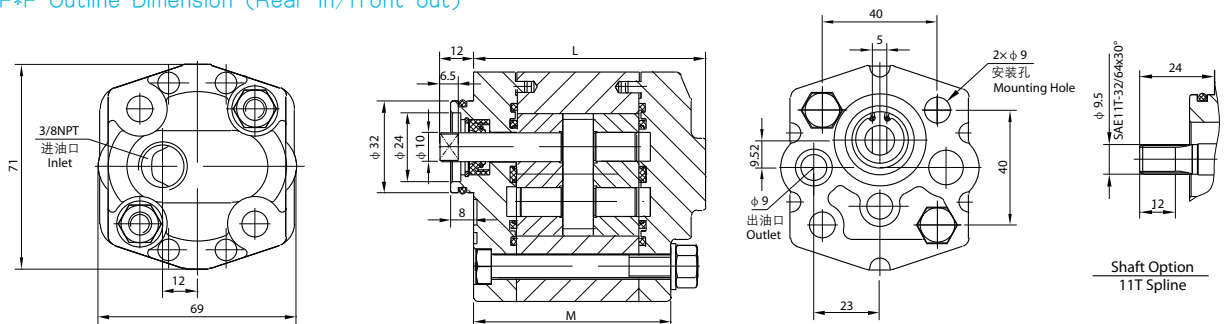


型谱 Order Code

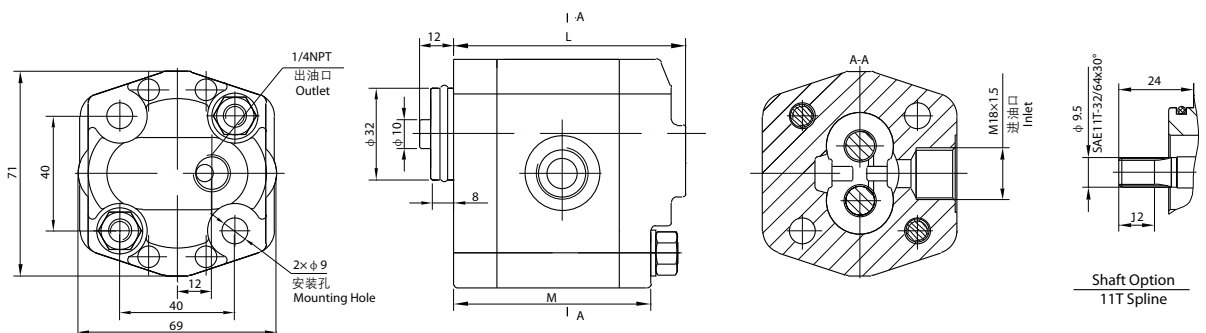
| CBKA - F * * * * | |
|--------------------------------|----------------------------------|
| 20MPa | 额定压力 Rated pressure |
| 0,63 - 8 mL/r | 排量 Displacement |
| D | 后盖进 / 后盖出 Rear in / rear out |
| C | 泵体进 / 泵体出 Side in / side out |
| B | 后盖进 / 泵体出 Rear in / side out |
| A | 泵体进 / 后盖出 Side in / rear out |
| 空白 Omit | 后盖进 / 前盖出 Rear in / front out |
| 进出油位置 Inlet/outlet Position | |
| 空白 Omit | 扁势 Tang |
| D | 花键 Spline |
| 轴端形式 Shaft Optional | |
| 空白 Omit | 顺时针 CW |
| F | 逆时针 CCW |
| 旋向 Direction | |

外形尺寸图 Outline Dimension

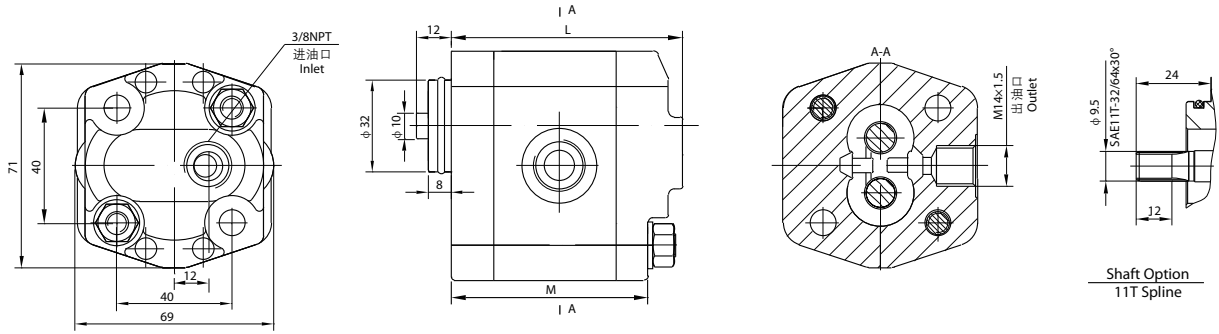
CBKA-F*F Outline Dimension (Rear in/front out)



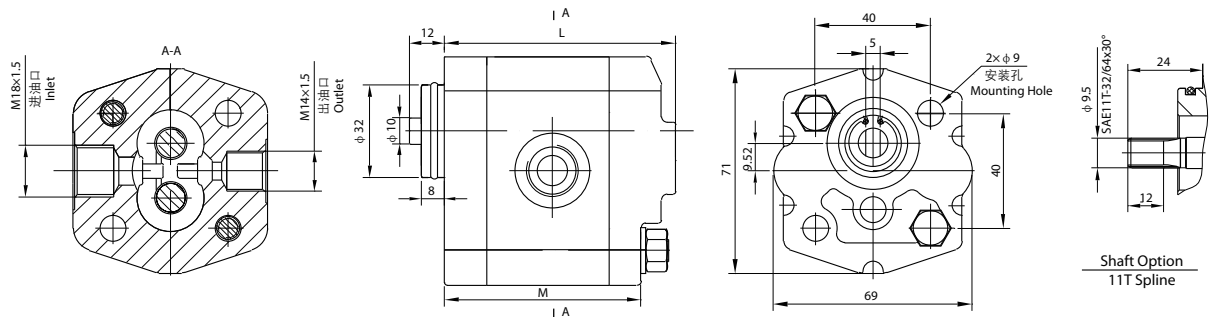
CBKA-F*AF Outline Dimension (Side in/rear out)



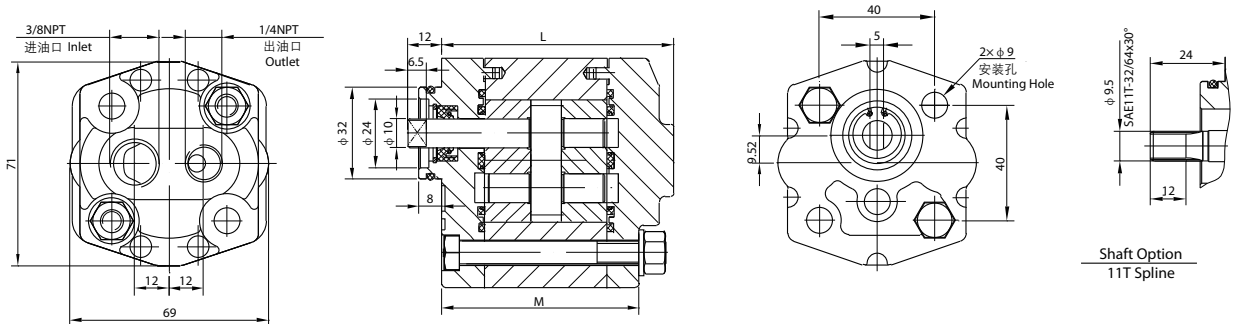
CBKA-F*B Outline Dimension (Rear in/side out)



CBKA-F*CF Outline Dimension (Side in/side out)



CBKA-F*DF Outline Dimension (Rear in/rear out)



技术参数 Technical Data

| Model 型号 | Displacement 排量 mL/r(in ³ /r) | 压力 pressure (MPa) | | | 转速 Speed (RPM) | | 尺寸 Dimension | | Efficiency 容积效率 |
|--------------|--|-------------------|----|----|----------------|-----------|--------------|-------|--------------------|
| | | P1 | P2 | P3 | Rated 额定 | Max 最高 | L(mm) | M(mm) | |
| CBKA-F0.63** | 0.66(0.040) | 20 | 25 | 28 | 2000 | 4000 | 72.5 | 60.5 | 85% |
| CBKA-F0.8** | 0.87(0.053) | | | | | | 73.3 | 61.3 | |
| CBKA-F1.2** | 1.27(0.077) | | | | | | 74.8 | 62.8 | |
| CBKA-F1.6** | 1.66(0.101) | | | | | | 76.3 | 64.3 | 86% |
| CBKA-F2.1** | 2.11(0.129) | | | | | | 78 | 66 | |
| CBKA-F2.5** | 2.51(0.153) | | | | | | 79.5 | 67.5 | |
| CBKA-F2.7** | 2.77(0.169) | | | | | | 80.5 | 68.5 | 88% |
| CBKA-F3.2** | 3.17(0.193) | 82 | 70 | | | | | | |
| CBKA-F3.7** | 3.7(0.225) | 84 | 72 | | | | | | |
| CBKA-F4.2** | 4.23(0.258) | 18 | 23 | 26 | 2000 | 3600 | 86 | 74 | 90% |
| CBKA-F5** | 5.0(0.305) | 14 | 18 | 23 | 1500 | 3000 | 89 | 77 | |
| CBKA-F6** | 6.0(0.366) | | | | | | 93 | 81 | |
| CBKA-F8** | 8.0(0.488) | | | | | | 100.5 | 88.5 | |